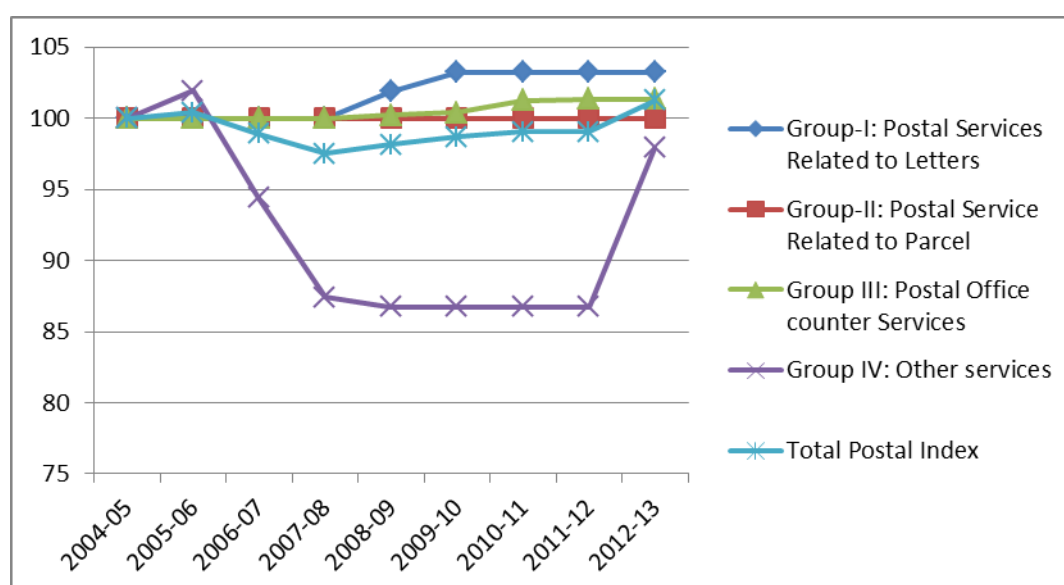


Trends in Postal Service Price Index (Exp PSPI)

Chart: Postal Indices (Group-wise) from 2004-05 to 2012-13



The overall Postal indices year wise along with the indices Sub Group wise are shown below. It may be observed from the graph above that the Overall Postal Index came down from 100.38 in the year 2005-06 to 99.03 in the year 2010-11 but started moving upwards again is now at the end of 2012-13 at 101.25 . The decrease and subsequent increase is attributable to the respective change in prices of Group IV, Other services (which includes services rendered by Business Development & Marketing Directorate of the Department of Postal services such as speed post, Express Post, Business Post, Bill mail Service, Mail box rental service, e-post etc) from 101.93 in the year 2004-05 to 86.73 in the year 2010-11 to 97.93 at the end of 2012-13. No significant change is observed in the prices in the Group II (Postal Service Related to Parcel) and in Group III (Postal Office counter Services) except for International services whereas marginal increase has been observed in the prices of Group I (Postal Services Related to Letters) from 101.89 in the year 2008-09 to 103.24 in the year 2012-13.

Experimental Price Indices for Postal Sector from 2004-05 to 2012-13

Yearly Index	2004-05	2005-06	2006-07	2007-08	2008-09	2009-10	2010-11	2011-12	2012-13
Group-I: Postal Services Related to Letters	100.00	100.00	100.00	100.00	101.89	103.24	103.24	103.24	103.24
Sub-group-I: National	100.00	100.00	100.00	100.00	100.00	100.00	100.00	100.00	100.00
Sub-group-II: international	100.00	100.00	100.00	100.00	145.34	177.73	177.73	177.73	177.73
Group-II: Postal Service Related to Parcel	100.00	100.00	100.00	100.00	100.00	100.00	100.00	100.00	100.00
Group-III: Postal Office counter Services	100.00	100.00	100.00	100.00	100.23	100.39	101.25	101.33	101.33
Sub-group-I: National	100.00	100.00	100.00	100.00	100.00	100.00	100.00	100.00	100.00
Sub-group-II: international	100.00	100.00	100.00	100.00	127.21	146.65	249.85	259.23	259.23
Group-IV: Other services	100.00	101.93	94.40	87.39	86.73	86.73	86.73	86.73	97.93
Total Postal Index	100.00	100.38	98.90	97.53	98.14	98.67	99.03	99.06	101.25