

GOVERNMENT OF INDIA
DEPARTMENT FOR PROMOTION OF INDUSTRY AND INTERNAL TRADE
OFFICE OF ECONOMIC ADVISER

New Delhi, Date: October 29th, 2020

PRESS RELEASE

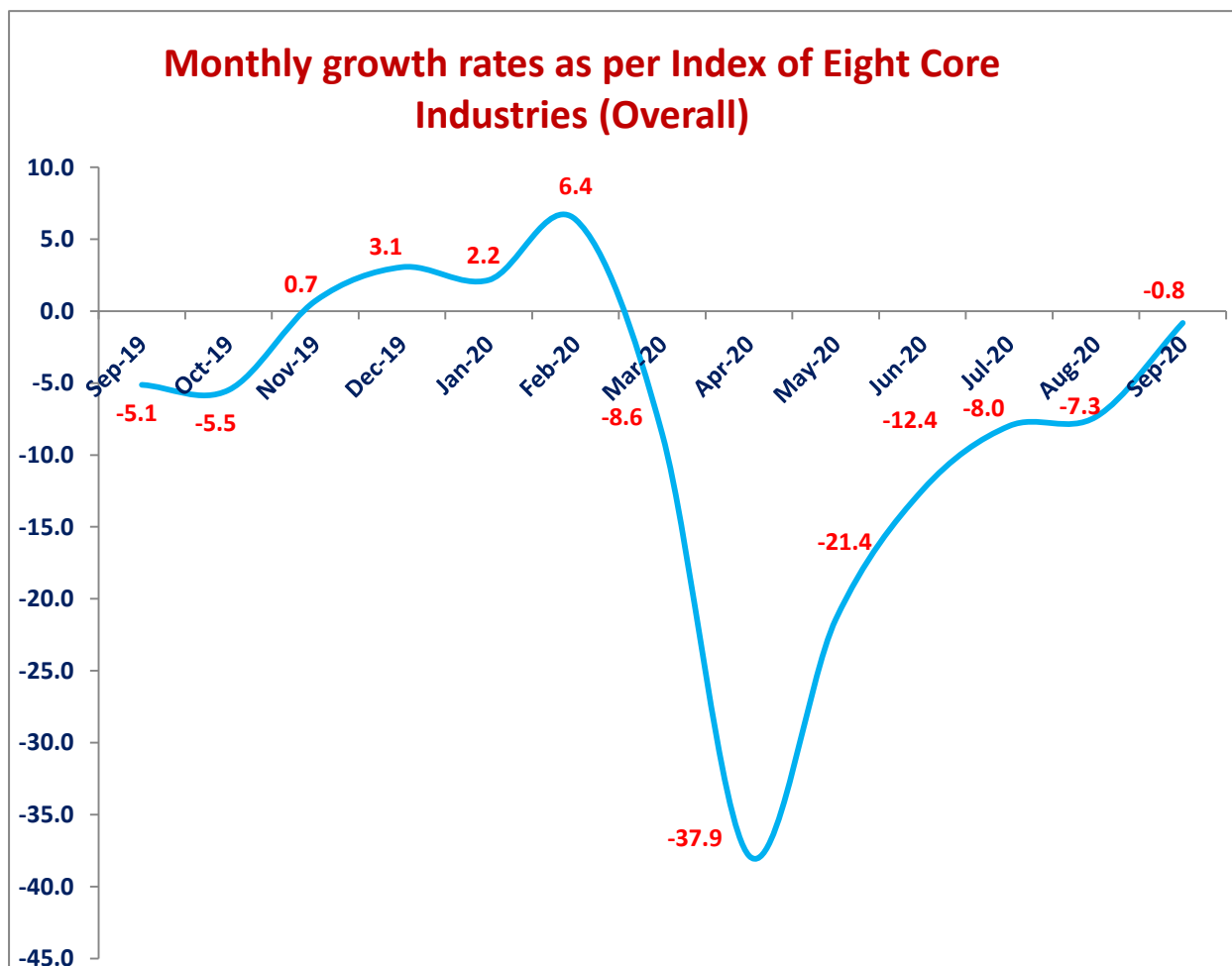
INDEX OF EIGHT CORE INDUSTRIES (BASE: 2011-12=100) FOR SEPTEMBER, 2020

The Office of Economic Adviser, Department for Promotion of Industry and Internal Trade is releasing Index of Eight Core Industries for the Month of September, 2020.

2. The combined Index of Eight Core Industries stood at 119.7 in September, 2020, which declined by 0.8 (provisional) per cent as compared to the Index of September, 2019. Its cumulative growth during April to September, 2020-21 has been (-) **14.9** %.

3. **Final** growth rate of Index of Eight Core Industries for June'2020 is revised to (-) **12.4** %. The Eight Core Industries comprise 40.27 per cent of the weight of items included in the Index of Industrial Production (IIP). Details of yearly/monthly index and growth rate is provided at **Annexure**.

4. Monthly growth rates of Index of Eight Core Industries (Overall) is depicted in the graph:



5. The summary of the Index of Eight Core Industries is given below:

Coal - Coal production (weight: 10.33 per cent) increased by 21.2 per cent in September, 2020 over September, 2019. Its cumulative index declined by 6.1 per cent during April to September, 2020-21 over corresponding period of the previous year.

Crude Oil - Crude Oil production (weight: 8.98 per cent) declined by 6.0 per cent in September, 2020 over September, 2019. Its cumulative index declined by 6.1 per cent during April to September, 2020-21 over the corresponding period of previous year.

Natural Gas - The Natural Gas production (weight: 6.88 per cent) declined by 10.6 per cent in September, 2020 over September, 2019. Its cumulative index declined by 13.2 per cent during April to September, 2020-21 over the corresponding period of previous year.

Refinery Products - Petroleum Refinery production (weight: 28.04 per cent) declined by 9.5 per cent in September, 2020 over September, 2019. Its cumulative index declined by 16.3 per cent during April to September, 2020-21 over the corresponding period of previous year.

Fertilizers- Fertilizers production (weight: 2.63 per cent) declined by 0.3 per cent in September, 2020 over September, 2019. Its cumulative index increased by 3.7 per cent during April to September, 2020-21 over the corresponding period of previous year.

Steel - Steel production (weight: 17.92 per cent) increased by 0.9 per cent in September, 2020 over September, 2019. Its cumulative index declined by 26.7 per cent during April to September, 2020-21 over the corresponding period of previous year.

Cement - Cement production (weight: 5.37 per cent) declined by 3.5 per cent in September, 2020 over September, 2019. Its cumulative index declined by 25.1 per cent during April to September, 2020-21 over the corresponding period of previous year.

Electricity - Electricity generation (weight: 19.85 per cent) increased by 3.7 per cent in September, 2020 over September, 2019. Its cumulative index declined by 8.2 per cent during April to September, 2020-21 over the corresponding period of previous year.

Note 1: Data for July, 2020, August, 2020 and September, 2020 are provisional.

Note 2: Since April, 2014, Electricity generation data from Renewable sources are also included.

Note 3: The industry-wise weights indicated above are individual industry weight derived from IIP and blown up on pro rata basis to a combined weight of ICI equal to 100.

Note 4: Since March 2019, a new steel product called Hot Rolled Pickled and Oiled (HRPO) under the item 'Cold Rolled (CR) coils' within the production of finished steel has also been included.

Note 5: Release of the index for October, 2020 will be on Friday 27th November, 2020.

Performance of Eight Core Industries
Yearly Index & Growth Rate
Base Year: 2011-12=100

Index

Sector	Weight	2012-13	2013-14	2014-15	2015-16	2016-17	2017-18	2018-19	2019-20	Apr-Sep 2019-20	Apr-Sep 2020-21
Coal	10.3335	103.2	104.2	112.6	118.0	121.8	124.9	134.1	133.6	110.3	103.6
Crude Oil	8.9833	99.4	99.2	98.4	97.0	94.5	93.7	89.8	84.5	86.0	80.7
Natural Gas	6.8768	85.6	74.5	70.5	67.2	66.5	68.4	69.0	65.1	66.9	58.1
Refinery Products	28.0376	107.2	108.6	108.8	114.1	119.7	125.2	129.1	129.4	126.1	105.6
Fertilizers	2.6276	96.7	98.1	99.4	106.4	106.6	106.6	107.0	109.8	107.1	111.1
Steel	17.9166	107.9	115.8	121.7	120.2	133.1	140.5	147.7	152.6	153.4	112.4
Cement	5.3720	107.5	111.5	118.1	123.5	122.0	129.7	147.0	145.7	142.5	106.7
Electricity	19.8530	104.0	110.3	126.6	133.8	141.6	149.2	156.9	158.4	168.0	154.3
Overall Index	100.0000	103.8	106.5	111.7	115.1	120.5	125.7	131.2	131.6	130.4	111.0

Growth Rates (in per cent)

Sector	Weight	2012-13	2013-14	2014-15	2015-16	2016-17	2017-18	2018-19	2019-20	Apr-Sep 2019-20	Apr-Sep 2020-21
Coal	10.3335	3.2	1.0	8.0	4.8	3.2	2.6	7.4	-0.4	-3.5	-6.1
Crude Oil	8.9833	-0.6	-0.2	-0.9	-1.4	-2.5	-0.9	-4.1	-5.9	-6.0	-6.1
Natural Gas	6.8768	-14.4	-12.9	-5.3	-4.7	-1.0	2.9	0.8	-5.6	-2.0	-13.2
Refinery Products	28.0376	7.2	1.4	0.2	4.9	4.9	4.6	3.1	0.2	-2.0	-16.3
Fertilizers	2.6276	-3.3	1.5	1.3	7.0	0.2	0.03	0.3	2.7	1.1	3.7
Steel	17.9166	7.9	7.3	5.1	-1.3	10.7	5.6	5.1	3.4	7.9	-26.7
Cement	5.3720	7.5	3.7	5.9	4.6	-1.2	6.3	13.3	-0.9	0.7	-25.1
Electricity	19.8530	4.0	6.1	14.8	5.7	5.8	5.3	5.2	0.9	3.9	-8.2
Overall Growth	100.0000	3.8	2.6	4.9	3.0	4.8	4.3	4.4	0.4	1.3	-14.9

Performance of Eight Core Industries

Monthly Index & Growth Rate

Base Year: 2011-12=100

Index

Sector	Coal	Crude Oil	Natural Gas	Refinery Products	Fertilizers	Steel	Cement	Electricity	Overall Index
Weight	10.3335	8.9833	6.8768	28.0376	2.6276	17.9166	5.3720	19.8530	100.0000
Sep-19	87.3	83.4	64.3	117.5	113.9	141.2	131.3	158.7	120.7
Oct-19	109.6	86.3	66.3	134.2	115.5	149.5	137.0	145.8	127.4
Nov-19	133.6	82.4	64.4	133.0	116.7	154.9	142.4	139.9	129.2
Dec-19	152.9	83.5	65.5	130.5	120.5	165.2	159.2	150.2	135.5
Jan-20	164.7	85.0	65.3	134.4	116.5	155.4	164.1	155.6	137.4
Feb-20	171.1	75.6	58.3	128.9	107.8	152.9	160.7	153.6	134.0
Mar-20	209.7	85.0	60.1	135.3	98.3	133.2	129.8	146.9	134.0
Apr-20	103.7	80.2	53.3	94.2	85.0	26.9	22.5	125.6	81.2
May-20	109.4	82.0	57.2	102.0	113.4	96.4	117.3	150.6	107.7
Jun-20	104.3	79.6	58.1	110.6	114.6	122.3	137.8	156.2	116.3
Jul-20	100.3	83.0	61.2	114.5	119.4	139.2	126.8	166.3	122.0
Aug-20	98.3	81.2	61.0	105.9	120.8	147.4	109.1	162.7	119.1
Sep-20	105.8	78.3	57.5	106.3	113.5	142.5	126.7	164.6	119.7

Growth Rates (in per cent)

Sector	Coal	Crude Oil	Natural Gas	Refinery Products	Fertilizers	Steel	Cement	Electricity	Overall Growth
Weight	10.3335	8.9833	6.8768	28.0376	2.6276	17.9166	5.3720	19.8530	100.0000
Sep-19	-20.5	-5.4	-4.9	-6.6	5.4	-1.4	-2.0	-2.6	-5.1
Oct-19	-17.6	-5.1	-5.6	0.4	11.8	-0.5	-7.7	-12.2	-5.5
Nov-19	-3.5	-6.0	-6.4	3.1	13.6	7.0	4.3	-4.9	0.7
Dec-19	6.1	-7.4	-9.2	3.0	10.2	8.7	5.5	0.0	3.1
Jan-20	8.0	-5.3	-9.0	1.9	-0.1	1.6	5.1	3.2	2.2
Feb-20	11.3	-6.4	-9.6	7.4	2.9	2.9	7.8	11.5	6.4
Mar-20	4.0	-5.5	-15.1	-0.5	-11.9	-21.9	-25.1	-8.2	-8.6
Apr-20	-15.5	-6.4	-19.9	-24.2	-4.5	-82.8	-85.2	-22.9	-37.9
May-20	-14.0	-7.1	-16.8	-21.3	7.5	-40.4	-21.4	-14.8	-21.4
Jun-20	-15.5	-6.0	-12.0	-8.9	4.2	-23.2	-6.8	-10.0	-12.4
Jul-20	-5.7	-4.9	-10.2	-13.9	6.9	-8.3	-13.5	-2.5	-8.0
Aug-20	3.6	-6.3	-9.5	-19.1	7.3	-1.7	-14.5	-1.8	-7.3
Sep-20	21.2	-6.0	-10.6	-9.5	-0.3	0.9	-3.5	3.7	-0.8
