

GOVERNMENT OF INDIA
MINISTRY OF COMMERCE INDUSTRY
OFFICE OF THE ECONOMIC ADVISER

Index of Eight Core Industries (Base: 2004-05=100)

July 2012

1. The summarized Index of Eight Core Industries with 2004-05 base is given at the **Annexure**.

2. The Eight core industries have a combined weight of 37.90 per cent in the Index of Industrial Production (IIP). The combined Index was 147.3 in July 2012 with a growth rate of 1.8% compared to their 8.2% growth in July 2011. The moderation in growth was on account of the negative growth in the production of Crude Oil, Natural Gas and Fertilizers, besides sharp decline in the growth rates of Steel, Cement and Electricity production.

During April-July 2012-13, the cumulative growth rate of the Core industries was 3.2 % as against their growth at 6.0% during the corresponding period in 2011-12.

Coal

3. Coal production (weight: 4.38%) registered a growth of 2.1% in July 2012 compared to its growth at 2.5% in July 2011. However, in cumulative terms Coal production had a growth of 5.3% during April-July 2012-13 compared to its growth at 0.8% during the same period of 2011-12.

Crude Oil

4. Crude Oil production (weight: 5.22%) had a negative growth of (-) 0.7% in July 2012 compared to its growth at 1.4% in July 2011. Cumulatively also, Crude Oil production had a negative growth of (-) 0.6% during April-July 2012-13 compared to its growth at 7.3% during the same period of 2011-12.

Natural Gas

5. The growth rates of Natural Gas production (weight: 1.71%) was negative both in July, 2012, at (-) 13.5% and in July 2011 at (-) 8.2%. Cumulatively, Natural Gas production registered a negative growth of (-) 11.7% during April-July 2012-13 and (-) 9.7% during the same period of 2011-12.

Petroleum Refinery Products (0.93% of Crude Throughput)*

6. Petroleum refinery production (weight: 5.94%) had a growth of 3.6% in July 2012 compared to its growth at 3.7% in July 2011. In cumulative terms, Petroleum refinery production registered a growth of 3.3% during

April-July 2012-13 compared to its 4.8% growth during the same period of 2011-12.

Fertilizers

7. Fertilizer production (weight: 1.25%) registered a negative growth of (-) 2.2% in July 2012 against its growth at (-) 1.6% in July 2011. Cumulatively Fertilizer production had a growth of (-) 9.5% during April-July 2012-13 compared to 0.4% growth during the same period of 2011-12.

Steel (Alloy + Non-Alloy)

8. Steel production (weight: 6.68%) had a growth rate of 4.5% in July 2012 against its 16.5% growth in July 2011. Cumulatively, Steel production had a 3.8% growth during April-July 2012-13 compared to its 10.4% growth during the same period of 2011-12.

Cement

9. Cement production (weight: 2.41%) registered a growth of 3.8% in July 2012 against its 13.0% growth in July 2011. The cumulative growth of Cement Production was 8.5% during April-July 2012-13 compared to its 3.1% growth during the same period of 2011-12.

Electricity

10. Electricity generation (weight: 10.32%) had a 2.2% growth in July 2012 compared to its 13.0% growth in July 2011. The cumulative growth of Electricity generation was 5.5% during April-July 2012-13 compared to 9.4% growth during the same period of 2011-12.

** RPL (SEZ) with refining capacity 29MMT was commissioned on 25.12.2008 but crude throughput not reported by the refinery and not included in production for entire period.*

N.B: Data are provisional. Revision has been made based on revised data obtained.

**PERFORMANCE OF EIGHT CORE INDUSTRIES
YEARLY INDEX & GROWTH RATE**

BASE YEAR 2004-05=100

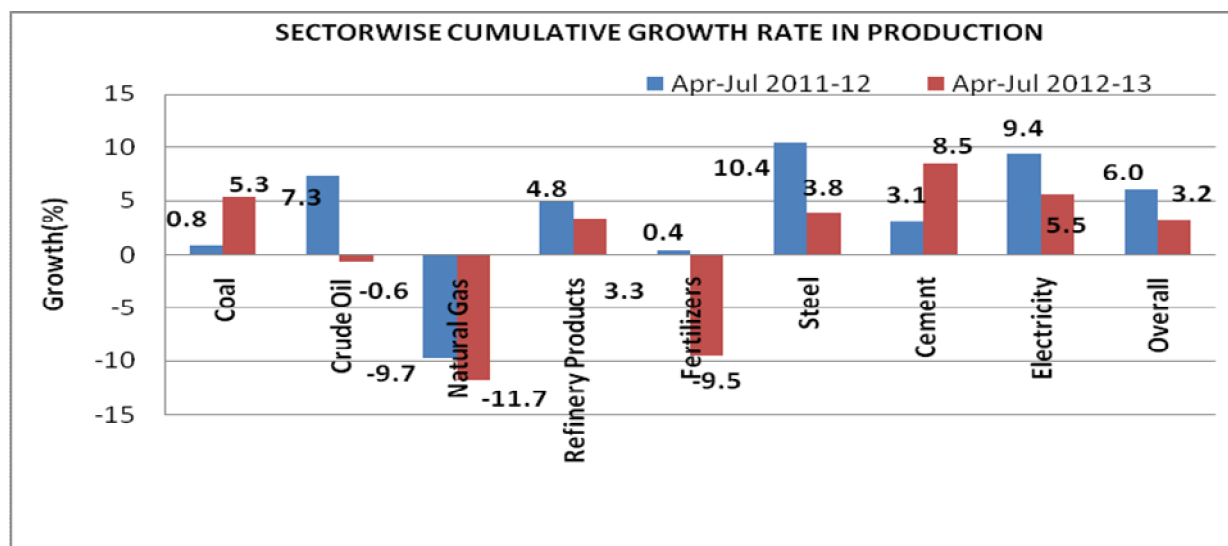
(Weight in IIP: 37.90 %)

INDEX

Sector	Weight	2007-08	2008-09	2009-10	2010-11	2011-12	Apr-Jul 2011-12	Apr-Jul 2012-13
Coal	4.379	119.9	129.5	140.0	139.7	141.4	125.7	132.4
Crude Oil	5.216	100.4	98.6	99.1	111.0	112.1	113.6	112.9
Natural Gas	1.708	102.1	103.4	149.5	164.4	149.7	154.5	136.4
Refinery Products	5.939	122.8	126.5	125.9	129.7	133.8	134.4	138.9
Fertilizers	1.254	95.5	91.8	103.4	103.4	103.8	100.7	91.2
Steel	6.684	128.9	131.4	139.3	157.7	168.7	167.0	173.4
Cement	2.406	132.5	142.1	157.1	164.2	175.2	169.2	183.5
Electricity	10.316	119.9	123.2	130.8	138.1	149.3	148.8	157.1
Overall Index	37.903	118.5	121.8	129.9	138.4	144.4	142.2	146.7

GROWTH RATE (in %)

Sector	Weight	2007-08	2008-09	2009-10	2010-11	2011-12	Apr-Jul 2011-12	Apr-Jul 2012-13
Coal	4.379	6.3	8.0	8.1	-0.2	1.2	0.8	5.3
Crude Oil	5.216	0.4	-1.8	0.5	11.9	1.0	7.3	-0.6
Natural Gas	1.708	2.1	1.3	44.6	10.0	-8.9	-9.7	-11.7
Refinery Products	5.939	6.5	3.0	-0.4	3.0	3.2	4.8	3.3
Fertilizers	1.254	-7.9	-3.9	12.7	0.0	0.4	0.4	-9.5
Steel	6.684	6.8	1.9	6.0	13.2	7.0	10.4	3.8
Cement	2.406	8.1	7.2	10.5	4.5	6.7	3.1	8.5
Electricity	10.316	6.3	2.7	6.2	5.6	8.1	9.4	5.5
Overall Index	37.903	5.2	2.8	6.6	6.6	4.4	6.0	3.2



**PERFORMANCE OF EIGHT CORE INDUSTRIES
MONTHLY INDEX & GROWTH RATE
BASE YEAR 2004-05=100**

(Weight in IIP: 37.90 %)

Index

Sector	Coal	Crude Oil	Natural Gas	Refinery Products	Fertilizers	Steel	Cement	Electricity	Overall Index
Weight	4.38	5.22	1.71	5.94	1.25	6.68	2.41	10.32	37.90
Jul-11	123.3	115.7	156.5	136.5	109.1	171.3	171.8	152.0	144.7
Aug-11	103.0	114.7	155.0	132.5	111.0	171.3	161.2	149.3	140.2
Sep-11	94.5	110.1	149.1	119.9	102.8	165.0	150.3	144.0	132.8
Oct-11	126.1	113.6	152.1	124.6	106.5	167.1	174.3	152.1	142.0
Nov-11	151.5	108.9	145.4	136.2	101.8	161.8	165.3	145.5	142.4
Dec-11	168.1	112.1	147.9	139.9	110.1	176.7	183.6	149.7	150.7
Jan-12	172.7	112.0	147.2	137.2	113.2	170.3	192.4	151.0	150.6
Feb-12	175.5	105.8	136.4	133.9	102.7	169.2	189.8	145.8	146.9
Mar-12	202.7	113.6	145.4	143.8	94.7	175.6	208.8	158.6	158.7
Apr-12	131.7	111.0	137.2	132.9	80.6	167.9	186.6	153.7	143.5
May-12	140.3	114.7	139.7	139.7	87.2	175.3	187.1	162.3	150.0
Jun-12	131.5	110.9	133.5	141.4	90.4	171.4	181.9	156.9	146.1
Jul-12	125.9	115.0	135.3	141.4	106.6	179.0	178.3	155.3	147.3

Growth rates (in %)

Sector	Coal	Crude Oil	Natural Gas	Refinery Products	Fertilizers	Steel	Cement	Electricity	Overall Index
Weight	4.38	5.22	1.71	5.94	1.25	6.68	2.41	10.32	37.90
Jul-11	2.5	1.4	-8.2	3.7	-1.6	16.5	13.0	13.0	8.2
Aug-11	-15.3	1.6	-5.3	3.9	4.3	7.9	8.4	9.4	3.8
Sep-11	-17.8	0.1	-6.4	4.4	-2.1	7.5	2.2	8.8	2.6
Oct-11	-9.0	-0.9	-7.4	-2.8	-2.1	4.2	0.3	5.4	0.4
Nov-11	4.9	-5.6	-10.1	11.2	-6.7	10.5	17.0	14.4	7.8
Dec-11	5.6	-5.6	-10.8	0.8	0.8	10.2	13.6	8.9	4.9
Jan-12	7.5	-2.0	-10.4	-4.6	4.0	-2.8	10.9	3.2	0.7
Feb-12	17.8	0.3	-7.6	6.2	4.1	4.7	9.8	8.6	6.9
Mar-12	6.8	-2.9	-10.1	1.6	1.5	2.3	7.1	2.8	2.2
Apr-12	3.8	-1.4	-11.3	0.5	-9.3	6.8	8.3	5.4	3.1
May-12	8.0	0.5	-10.8	2.9	-15.1	4.9	11.2	5.9	4.0
Jun-12	7.2	-0.8	-11.1	6.1	-11.7	-0.5	10.7	8.8	3.9
Jul-12	2.1	-0.7	-13.5	3.6	-2.2	4.5	3.8	2.2	1.8